

Ordering Information

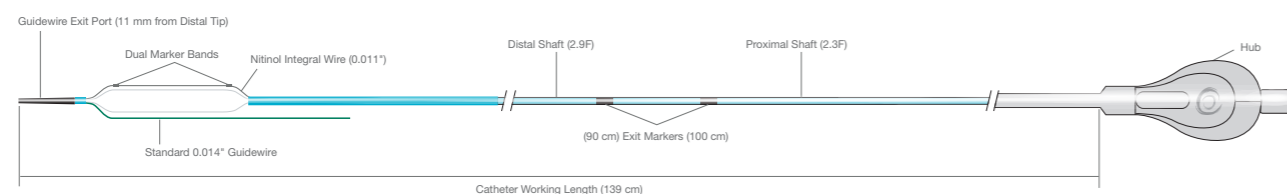
Balloon Diameter (mm)	Balloon Working Length (mm)		
	10	15	20
2.0	620-103-1	620-153-1	620-203-1
2.5	625-103-1	625-153-1	625-203-1
3.0	630-103-1	630-153-1	630-203-1
3.5	635-103-1	635-153-1	635-203-1
4.0	640-103-1	640-153-1	640-203-1

Compliance Chart

Pressure (atm)	Balloon Diameter (mm)				
	2.0	2.5	3.0	3.5	4.0
4	1.96	2.45	2.94	3.43	3.92
6 NOM*	2.00	2.50	3.00	3.50	4.00
8	2.04	2.55	3.05	3.57	4.08
10	2.08	2.60	3.11	3.63	4.15
12	2.12	2.65	3.17	3.70	4.23
14	2.16	2.70	3.22	3.76	4.31
16 RBP**	2.20	2.75	3.28	3.83	4.38
18	2.23	2.80	3.34	3.90	4.46
20	2.27	2.86	3.39	3.96	4.53

* Nominal Pressure. The nominal in vitro device specifications do not take into account any lesion resistance.

** Rated Burst Pressure. Do not exceed RBP



For more information please visit our website at www.OrbusNeich.com or contact us:

Corporate Headquarters

Unit 303 & 305, 3/F, Building 20E
Hong Kong Science Park
Shatin, N.T., Hong Kong, China
Phone +852.2802.2288
Fax +852.2507.3532

EMEA Regional Headquarters

Drs. W. van Royenstraat 5
3871 AN Hoevelaken
The Netherlands
Phone +31.33.254.1150 Toll Free Phone 00800.0254.1150*

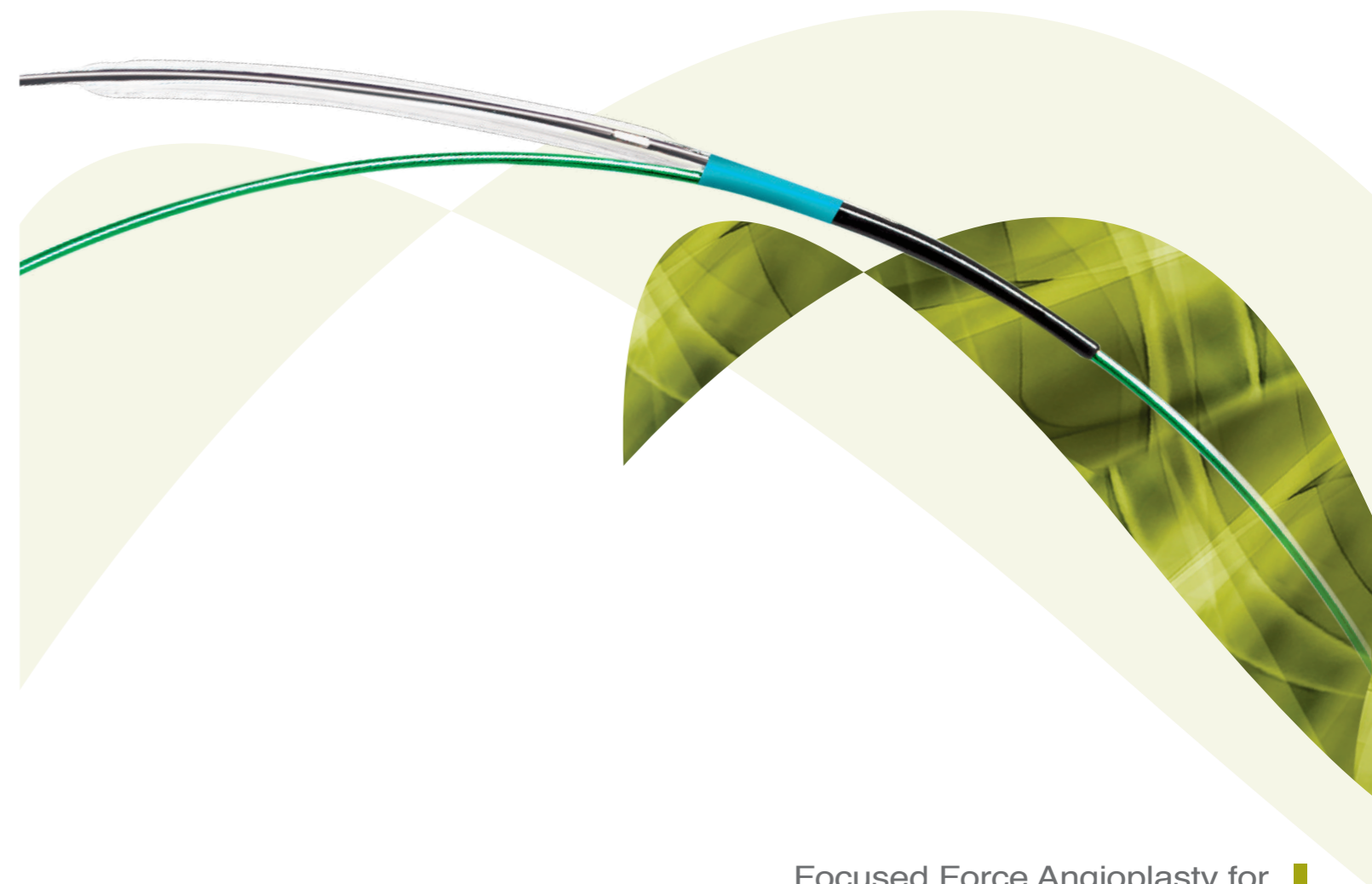
* Only for Belgium, Denmark, France, Germany, Ireland, Netherlands, Norway, Sweden and UK

©2020 OrbusNeich Medical Company Limited or its affiliates. All rights reserved.

Not available for sale in the USA.

G-70-0515 Rev02

Scoreflex® and OrbusNeich are registered trademarks of OrbusNeich Medical Company Limited or its affiliates. All data and photos on file. Illustrations are not to be considered as engineering drawings or photos.



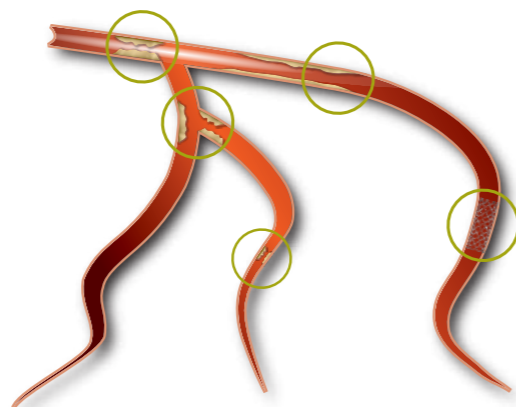
Focused Force Angioplasty for
Controlled Lesion Preparation

Low Dilatation Pressure, Big Dilatation Effect

Scoreflex is a focused force dilatation balloon that comes with a dual wire system which enables effective dilatation under lower inflation pressure. For optimal results, a gradual step-up inflation protocol should be adopted.

Recommended Applications:

- Lesion preparation for stents, scaffolds, DEB
- Tight and distal lesions
- In-stent restenosis
- Bifurcation lesions
- Ostial lesions
- Long diffuse disease



X-Flex tip and TiFo Folding for Low Crossing Profile

Splendid Crossability

X-Flex tip and **TiFo** Processing enable unsurpassed crossability.

Flex Zone

Flexible soft tapered tip allows for smooth lesion entry.

Transit Zone

Transit zone provides a balanced support to guide the balloon to pass through the lesion.

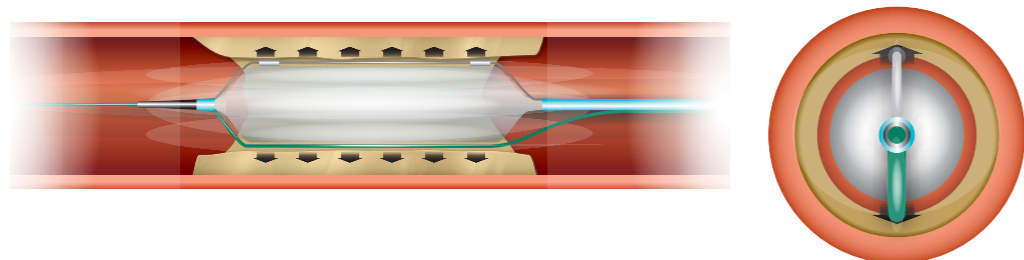
Support Zone

Support zone secures the guide wire exit positioning and assists in pushability of the device.

Tight Fold processing results in a slender primary profile for enhanced crossability through tight lesions.

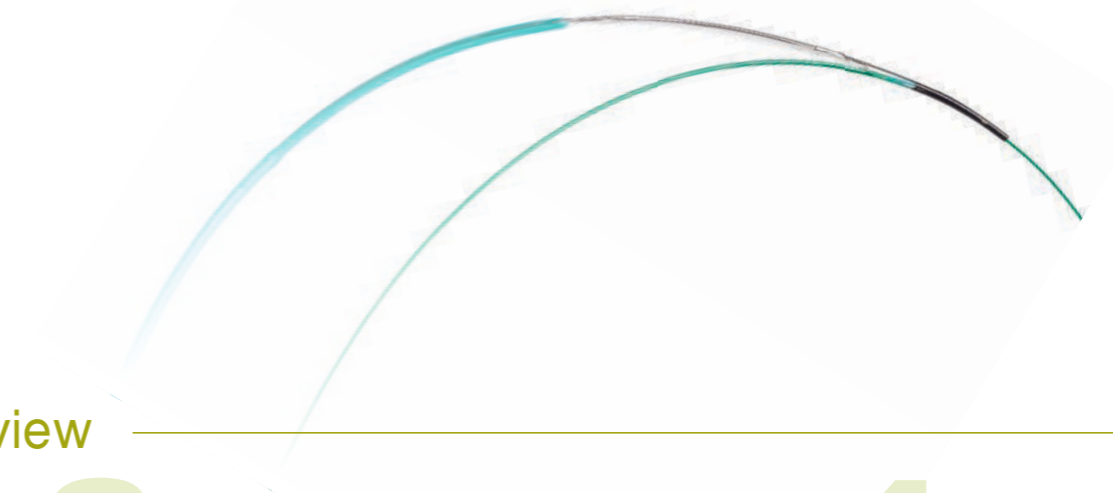
Effective Focused Force Dilatation with Dual Wire System

The dual wire system creates a focal stress pattern to facilitate effective controlled plaque modification at low resolution pressure.

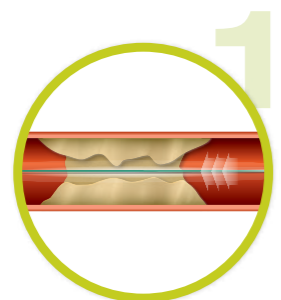


Designed for Unbeatable Trackability

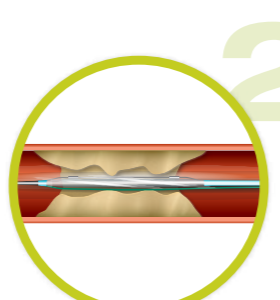
Soft balloon material combined with elastic nitinol integral wire exhibit exceptional trackability.



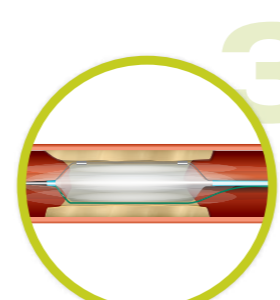
Procedural Overview



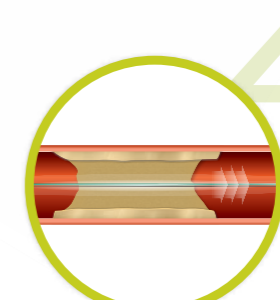
1 Advance a standard guidewire across the target lesion.



2 Advance Scoreflex over the guidewire and cross the target lesion. Position the dilatation section of the balloon within the stenosis.



3 Begin inflation of Scoreflex at 2 atm and hold at this pressure for 10-20 seconds. Gradually increase pressure in 1 atm steps until the target balloon diameter is achieved. Hold at the final pressure for 20 seconds.



4 Withdraw the deflated Scoreflex catheter once the desired result is achieved.